

**PROJECT:
TOPOGRAPHIC PLAN OF SURVEY**

**LOCATION:
PART OF
PEMBROKE MARINA
CITY OF PEMBROKE
COUNTY OF RENFREW**

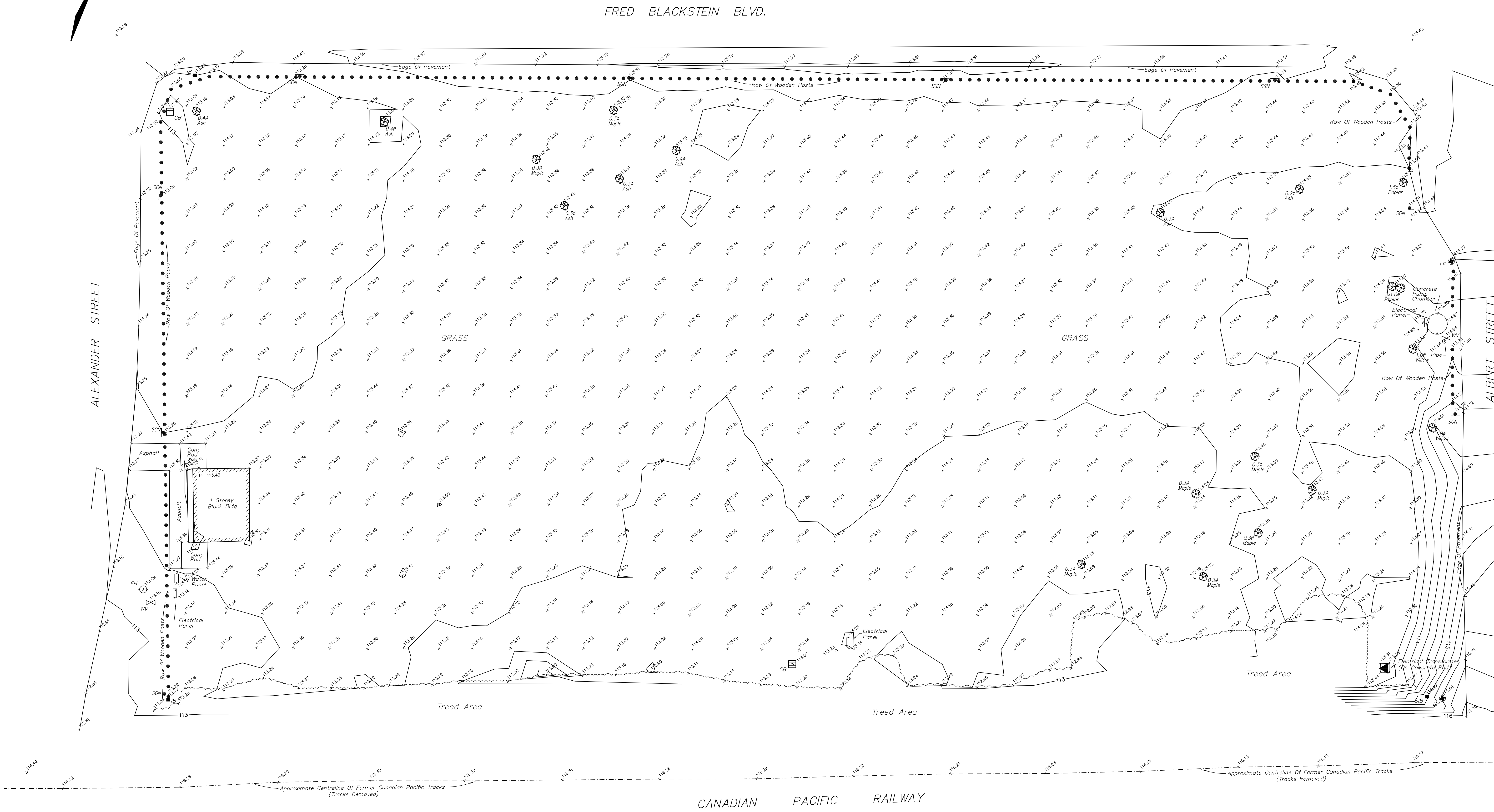
SCALE 1 : 250
2.5 0 5 10 15 20 25 METRES

ADAM KASPRZAK SURVEYING LTD.

NOTES:

DRAWING NOTE:
DRAWING CO-ORDINATE SYSTEM IS DERIVED FROM GPS OBSERVATIONS USING THE PRECISE POINT POSITIONING (PPP) SERVICE, UTM ZONE 18, NAD83 (CSRS).

ELEVATION NOTE:
ELEVATIONS SHOWN ON THIS PLAN ARE GEODETIC AND ARE REFERRED TO VBM 0011986U004 HAVING AN ELEVATION OF 116.463m.



LEGEND

- IRON BAR
- LIGHT POLE (LP)
- CATCH BASIN (CB)
- TREE
- WATER VALVE (WV)
- FIRE HYDRANT (FH)
- HYDRO POLE (HP)
- FLAG POLE
- WOODEN POST
- STREET SIGN (SGN)
- (FF) — FINISHED FLOOR
- ELECTRICAL TRANSFORMER
- (CSP) — CORRUGATED STEEL PIPE CULVERT
- (FP) — FENCE POST

AK ADAM KASPRZAK SURVEYING LTD.
ONTARIO LAND SURVEYORS
432 PEMBROKE ST. W. P.O. BOX 492
PEMBROKE ONTARIO K8A 6X7
PHONE (613) 735-0764